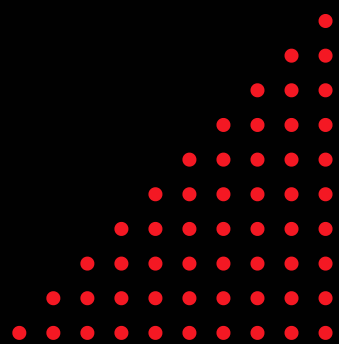


FERMAX

1991



WHY FERMAX?

INDEPENDENCE

The professional design bureau elaborates and communicates the details with the construction site and our plant for cutting and bending facade materials.

QUALITY

We have been specializing facade systems and solutions for over **30 years** with a rich list of references and over **160,000 m2** of facades completed in the last 5 years. A close and sustainable relationship with numerous subcontractors enables us to have an average of **110 workers** per day on construction sites.

TECHNOLOGY

Following trends in BIM environment, among others, we use **HiCad software** for designing and modelling facades.

RESPECT

We respect the investors' demands, our associates, the community and competitors, always ready for new challenges.





Panorama Vozdovac

INVESTOR: ALPROS DOO

Contact facade: 5400m²

Ventilated facade: 500m²

Start: February 2018.

End: March 2019.



MATERIALS

Contact facade:

- Rofix ETICS systems
- TI mineral wool **Rockwool**

Ventilated facade:

- Wood decor **Ragno** ceramic tiles adhered to the **Tehnomarket** substructure
- TI mineral wool **Rockwool**



Porto Montenegro

INVESTOR: STRABAG DOO

Contact facade: 5000m²

Ventilated facade: 9000m²

Start: September 2018.

End: August 2019.

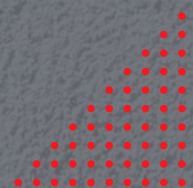
MATERIALS

Contact facade:

- **STO ETICS** systems, system for stone adherence, **Decco** profiles
- TI styrofoam EPS **STO**

Ventilated facade:

- **STO Ventec**
- **Alucoil** Larson (ACP) panels
- **Cedral** panels
- External ceilings **Knauf Aquapanel** (cement boards)
- **Tehnmarket** and **STO** substructure
- TI mineral wool **STO**



Esad Pasina

INVESTOR: NIKOLA KADIC

Contact facade: 200m²

Ventilated facade: 700m²

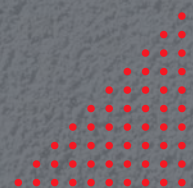
Start: September 2019.

End: November 2020.

MATERIALS

Ventilated facade:

- Facade assemblies made of stretched aluminum mesh with movable elements
- **Alucoil** Larson (ACP) panels
- **Equitone** fiber-cement panel adhered to the **Ejot** substructure
- TI mineral wool **Knauf** Insulation





Blok A Phase 4


INVESTOR: DEKA INZENJERING

Contact facade: 4500m²

Ventilated facade: 7000m²

Start: March 2019.

End: December 2019.



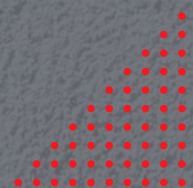
MATERIALS

Contact facade:

- **STO ETICS** systems
- TI mineralna wool **Knauf Insulation**

Ventilated facade:

- **STO Ventec** system
- Substructure **EJOT**
- TI mineral wool **Knauf Insulation**



Gramsijeva

INVESTOR: NEIMAR V AD

Contact facade: 3200m²

Ventilated facade: 300m²

Start: July 2019.

End: November 2020.

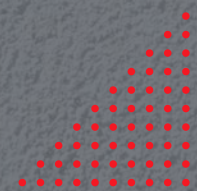
MATERIALS

Contact facade:

- **STO ETICS** systems
- **TI mineral wool Knauf Insulation**

Ventilated facade:

- **Laminam** ceramic tiles adhered to the **Ejot** substructure
- **TI mineral wool Knauf Insulation**





Park 11

INVESTOR: ENERGOPROJEKT DOO

Contact facade: 8800m²

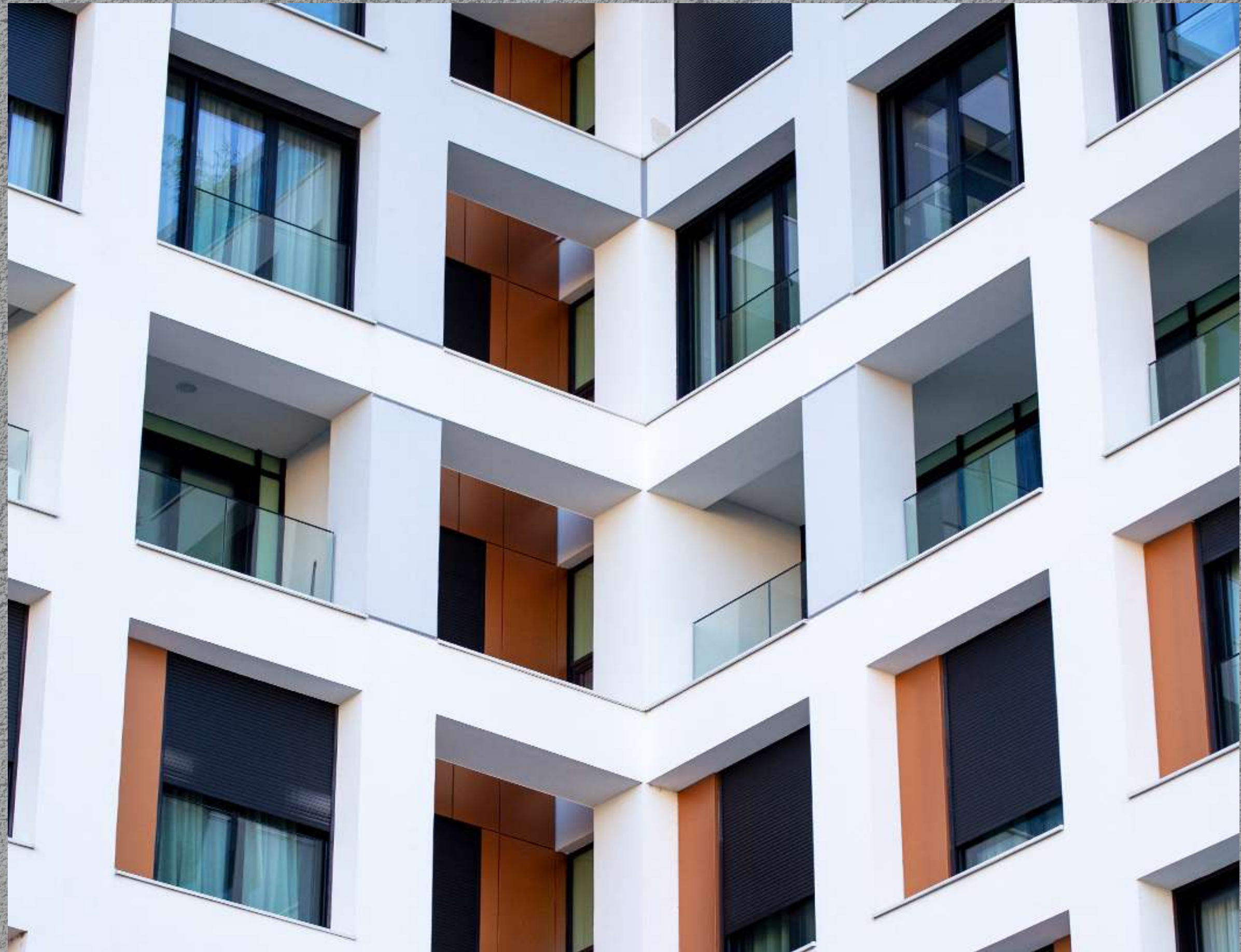
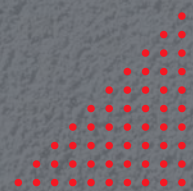
Start: November 2019.

End: January 2021.

MATERIJALI

Contact facade:

- **STO ETICS** systems
- **TI mineral wool Knauf Insulation**



Kneza Milosa Residence

INVESTOR: ALMOGIM HOLDINGS, YOSSI AVRAHAMI,
ENERGOGROUP VISOKOGRADNJA AD

Contact facade: 5800m²

Ventilated facade: 2500m²

Ornamental facade: 2000m²

Start: January 2020.

End: November 2020.

MATERIALS

Contact facade:

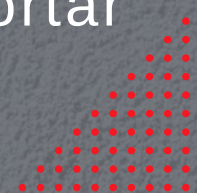
- **Rofix ETICS system** + **DesignPutz** decorative mortar for shallow profiles
- **TI mineral wool Knauf Insulation**

Ventilated facade:

- **Laminam** ceramic panels adhered to the **Ejot** substructure
- **TI mineral wool Knauf Insulation**

Ornamental facade:

- Hand-mortared facade with ornaments made of cement mortar and artificial stone



K-District Phase A

INVESTOR: PINNACLE, ALEKSANDAR GROUP

Contact facade: 10000m²

Ventilated facade: 1350m²

Start: February 2020.

End: May 2021.

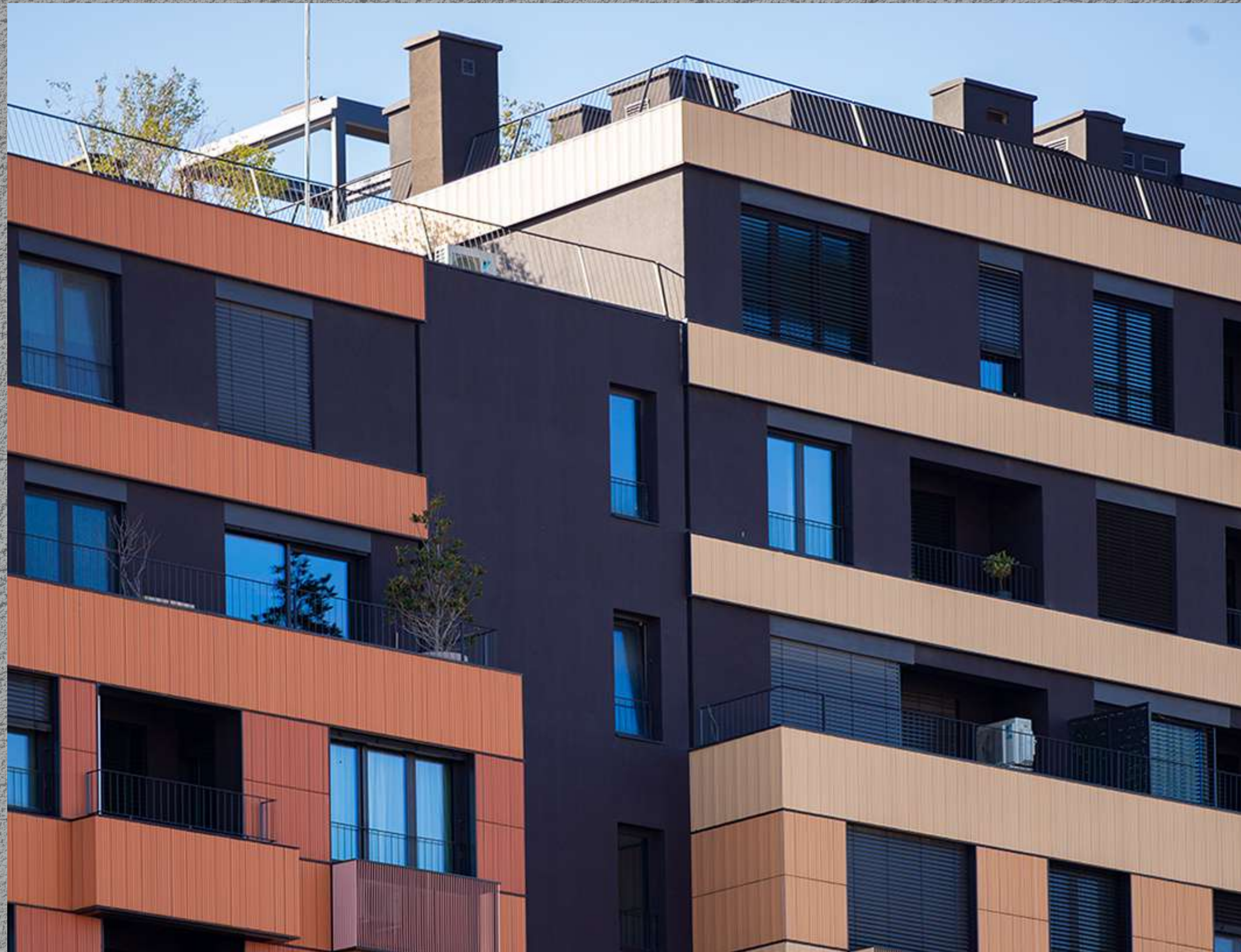
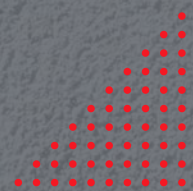
MATERIALS

Contact facade:

- **STO ETICS** systems
- **TI mineral wool Knauf Insulation**

Ventilated facade:

- **Hunter Douglas Terracotta** panels fixed to the **Ejot** substructure with hidden anchors
- **TI mineral wool Knauf Insulation**



Novi Dorcool Phase 1

INVESTOR: DEKA INZENJERING

Contact facade: 1370m²

Ventilated facade: 10200m²

Fences: 1940m²

Start: November 2020.

End: August 2021.

MATERIALS

Contact facade:

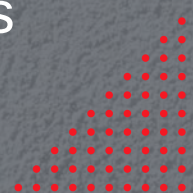
- Rofix ETICS systems
- TI mineralna vuna **Knauf Insulation**

Ventilated facade:

- **Laminam** ceramic panels adhered to the **Ejot** substructure
- **Alucoil** (ACM) Larson panels and stone panels fixed to the **Tehnomarket** substructure
- TI mineral wool **Knauf Insulation**

Fences:

- **Q-railing** glass fences systems





Petica Blok 63

INVESTOR: GRADJEVINSKA DIREKCIJA SRBIJE

Contact facade: 7800m²

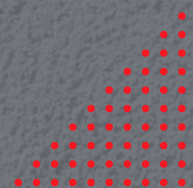
Start: March 2021.

End: March 2022.

MATERIALS

Contact facade:

- Rofix ETICS systems
- TI mineral wool Knauf Insulation





Kapetan Misina

INVESTOR: KAPETAN VLIIGO DOO

Contact facade: 1420m²

Ventilated facade: 550m²

Start: June 2021.

End: February 2022.

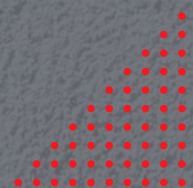
MATERIALS

Contact facade:

- **STO ETICS** systems + **STO clinker** adhering system
- **TI mineral wool Knauf Insulation**

Ventilated facade:

- Stone and **Alubond (ACM)** panels fixed to the **Ejot** substructure
- **TI mineral wool Knauf Insulation**



Zepterra

INVESTOR: YIHAI PROPERTIES GROUP

Contact facade: 1330m²

Ventilated facade: 9600m²

Start: July 2021.

End: June 2022.

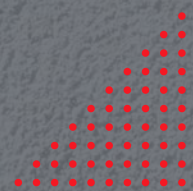
MATERIALS

Contact facade:

- Rofix ETICS systems
- TI mineral wool Knauf Insulation

Ventilated facade:

- **Equitone** (fiber cement) panels fixed to the **Ejot** substructure with rivets
- TI mineral wool **Knauf Insulation**



Green Escape K3

INVESTOR: IMEL GROUP DOO

Contact facade: 3390m²

Ventilated facade: 1125m²

Start: August 2021.

End: October 2022.

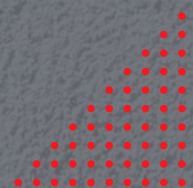
MATERIALS

Contact facade:

- Rofix ETICS systems
- TI mineral wool **Knauf Insulation**

Ventilated facade:

- **Alubond** (ACM) panels and ceramic tiles fixed with mat clips to the **Tehnomarket** substructure
- TI mineral wool **Knauf Insulation**





K-District Phase B and C

INVESTOR: PINNACLE, ALEKSANDAR GROUP

Contact facade phase B: 11000m²

Contact facade phase C: 4000m²

Start: October 2021.

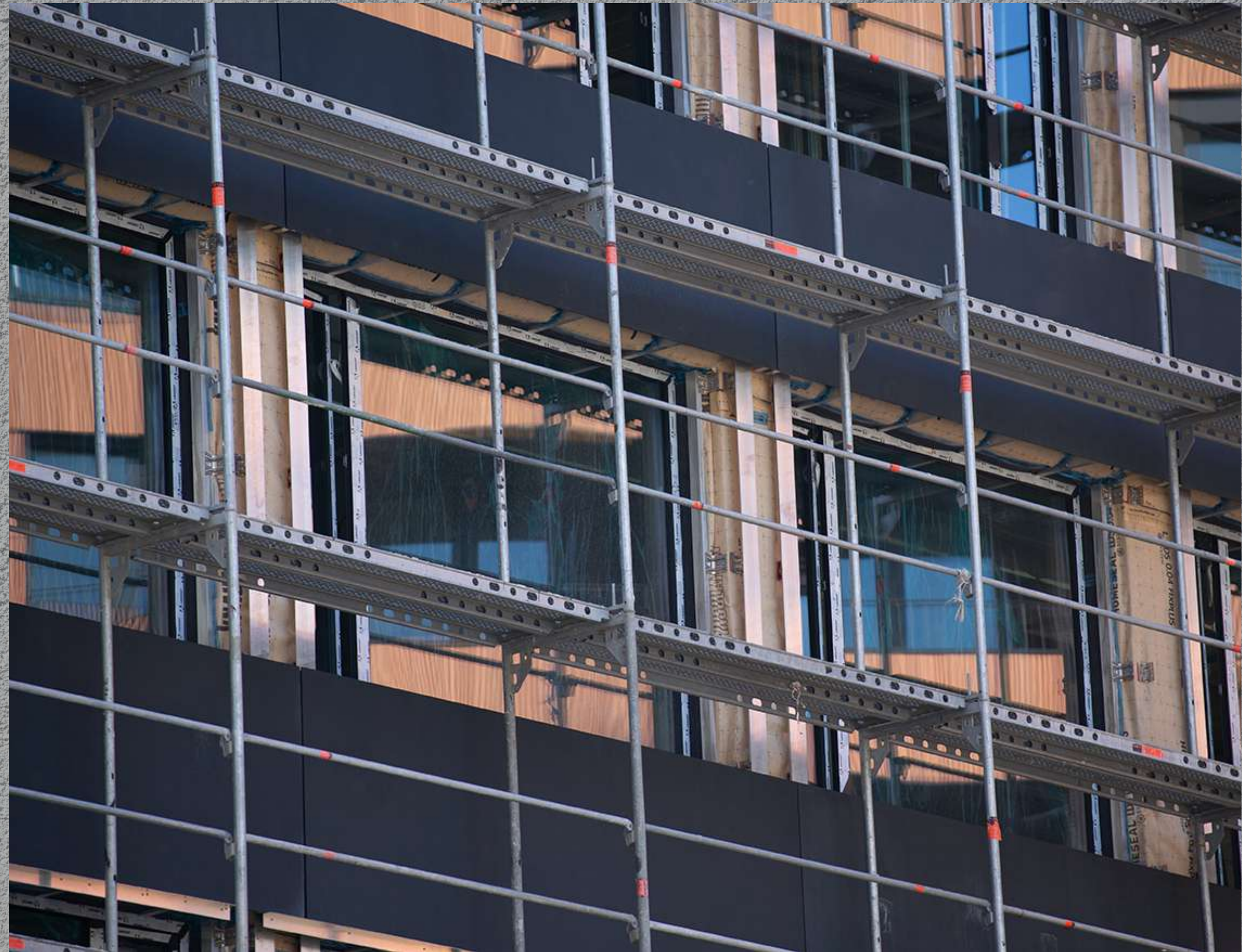
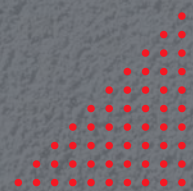
End: work in progress



MATERIALS

Contact facade:

- Rofix ETICS systems
- TI mineral wool **Knauf Insulation**





Elixir Garden

INVESTOR: ELIXIR GROUP

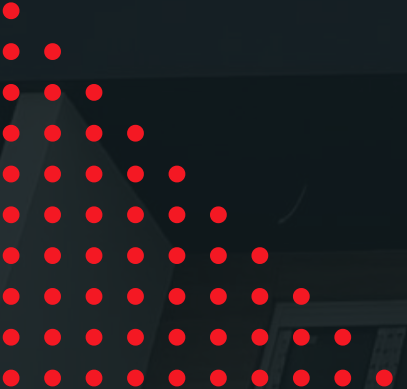
Contact facade: 15000m²

Ventilated facade: 1700m²

Fences: 910m²

Start: March 2022.

End: work in progress



MATERIALS

Contact facade:

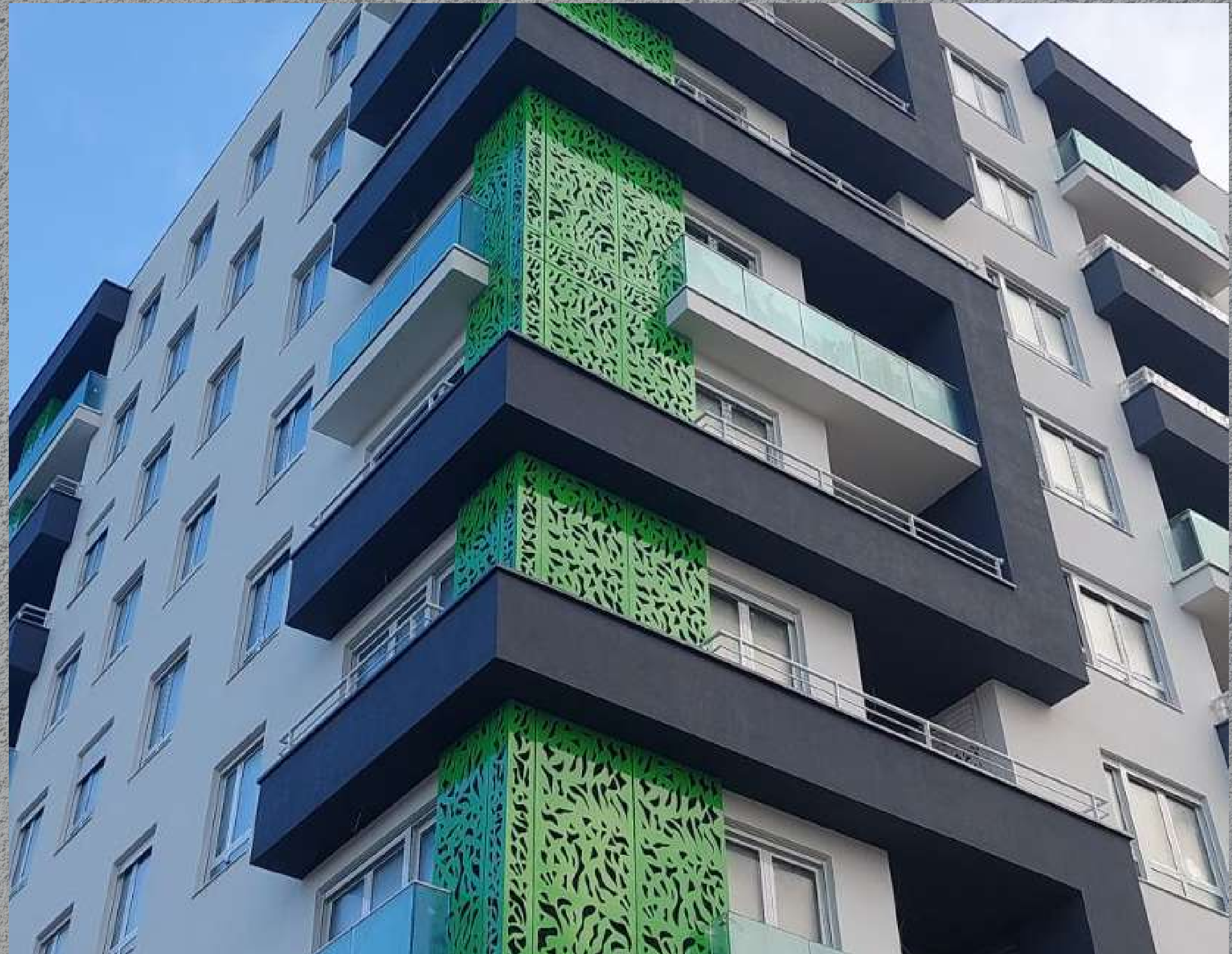
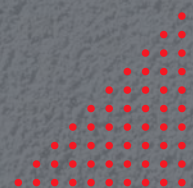
- Rofix ETICS systems
- TI mineral wool **Knauf Insulation**

Ventilated facade:

- Tehnomarket perforated aluminium sheets fixed to the **Slavonia** substructure
- TI mineral wool **Knauf Insulation**

Fences:

- Inox fences





Novi Dorcol Phase 2

INVESTOR: DEKA INZENJERING

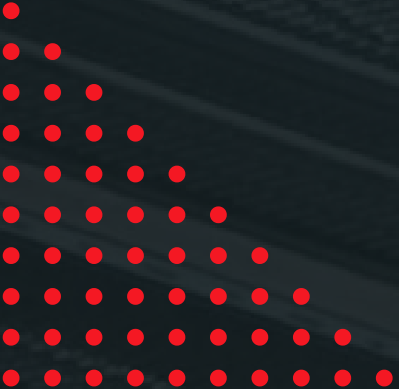
Contact facade: 2200m²

Ventilated facade: 16000m²

Fences: 3100m²

Start: September 2022.

End: work in progress



MATERIALS

Contact facade:

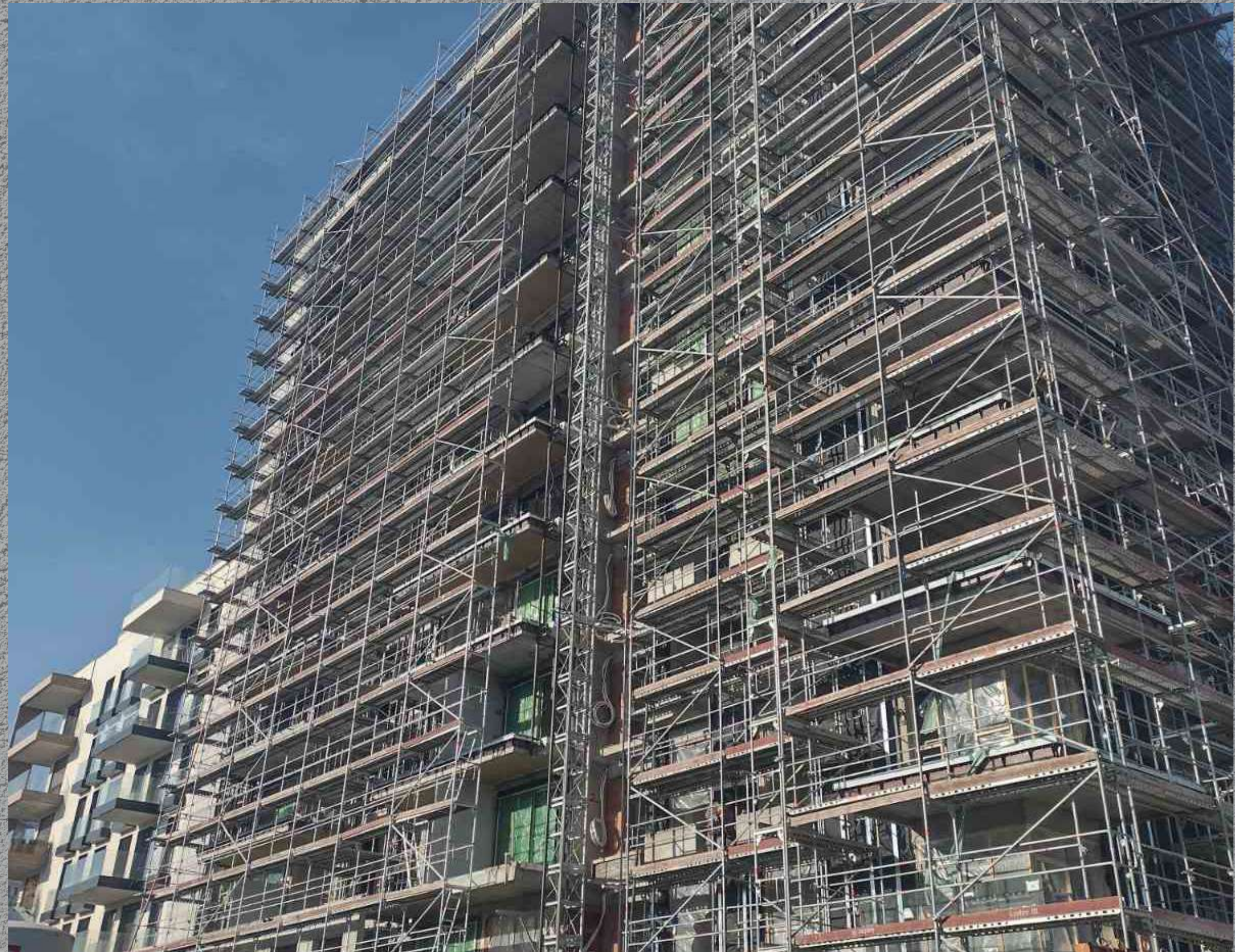
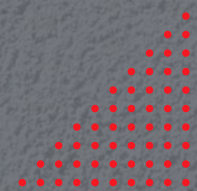
- Rofix ETICS systems
- TI mineral wool **Knauf Insulation**

Ventilated facade:

- **Agrob Buchtal** KeraTwin ceramic panels on **Q Vent** substructure
- **Laminam** ceramic tiles adhered to the **Ejot** substructure
- **Alucoil** Larson (ACM) panels fixed to the **Tehnmarket** substructure
- TI mineral wool **Knauf Insulation**

Fences:

- **Q-railing** glass fences





Scaffolding

In the last 5 years, we have assembled/dismantled
over **150,000 m²** of scaffolding

Currently we own **12.000m²** of Layher scaffolding



EMPLOYEES

77

ARCHITECTS

8

CONSTRUCTION
ENGINEERS

5

MECHANICAL
ENGINEER

1

CONSTRUCTION SITE
MANAGERS

4

FACADE
WORKERS

48

SCAFFOLDERS

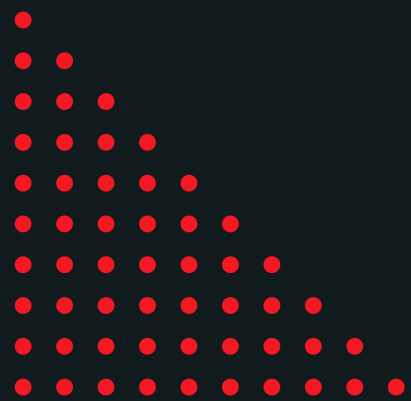
5

PROJECT
MANAGERS

2

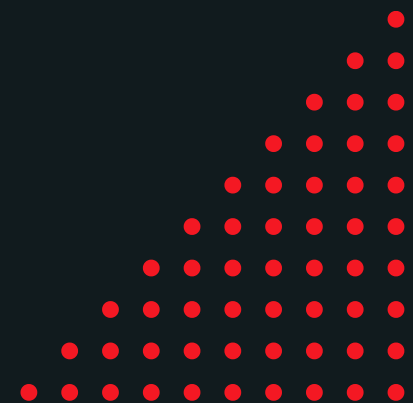
ACCOUNTANTS AND
ADMINISTRATION

4




CONTACT

WWW.FERMAX.RS



ADDRESS

 Aleksinackih Rudara 39d, Belgrade

 IP Pavlova Square 1789/5, Prague

EMAIL ADDRESS

office@fermax.rs

TELEPHONE

+381 11 4068 254

+420 725 836 276

